

# CCT

COMMERCIAL CARPET TILE

# HRQ

HYBRID RESILIENT QUARTZ



## CONTRACT180

# HRK

HYBRID RESILIENT KONCRETE

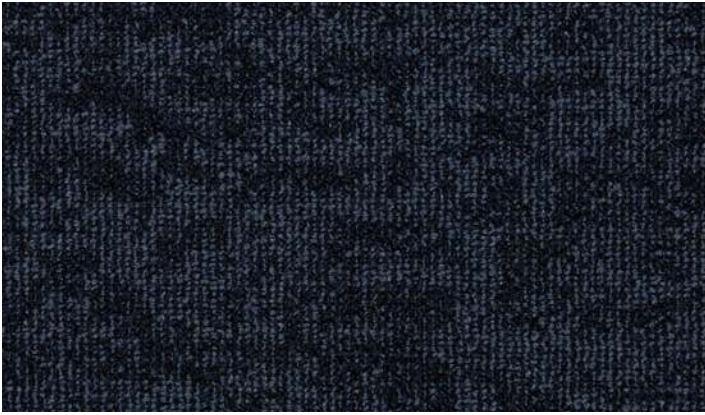
**DESIGNED TO PAIR**



# SHORE ISLAND

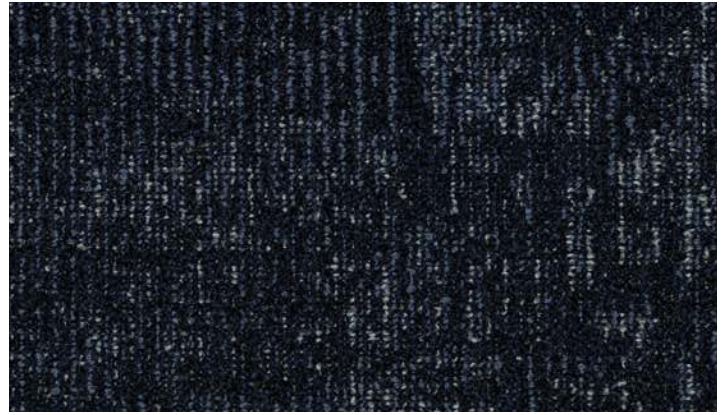
**CCT - COMMERCIAL CARPET COLLECTION**

18" x 36"



**SEASIDE**

WRIGHTSVILLE | 35909 **SURF**



WAVE RIDER | 35119

**HRK - HYBRID RESILIENT KONCRETE**

18" x 36"



TITANIUM | 42527



URBAN | 42545



INDIGO | 42547

**HRQ - HYBRID RESILIENT QUARTZ**

24" x 24"



FLINT | 56713



FOSSIL | 56714



BLUE PEARL | 56717

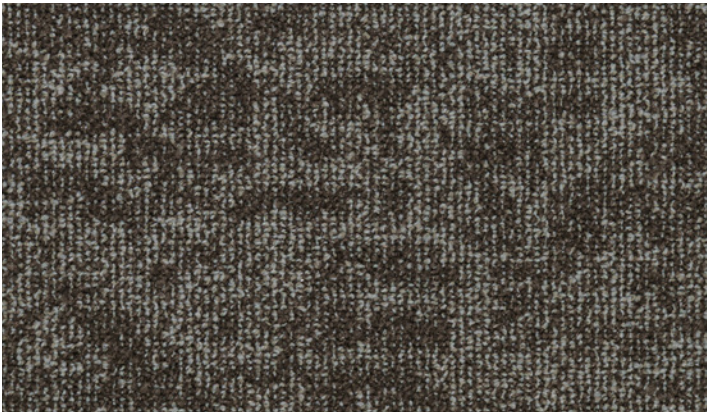
**DESIGNED TO PAIR**



# OUTER BANKS

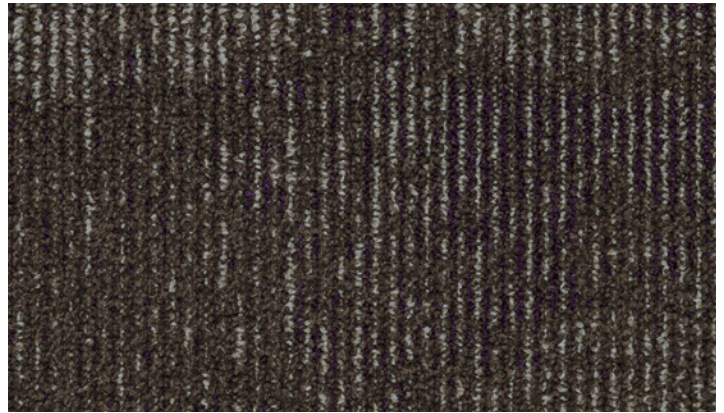
**CCT - COMMERCIAL CARPET COLLECTION**

18" x 36"



**SEASIDE**

**HATTERAS | 14905 SURF**



**OUTER SWELL | 14115**

**HRK - HYBRID RESILIENT KONCRETE**

18" x 36"



**TITANIUM | 42527**



**URBAN | 42545**



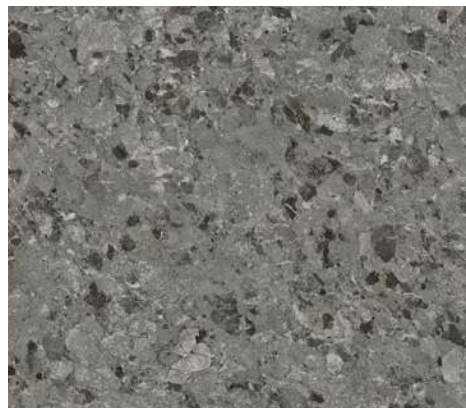
**UMBER | 42544**

**HRQ - HYBRID RESILIENT QUARTZ**

24" x 24"



**FLINT | 56713**



**FOSSIL | 56714**

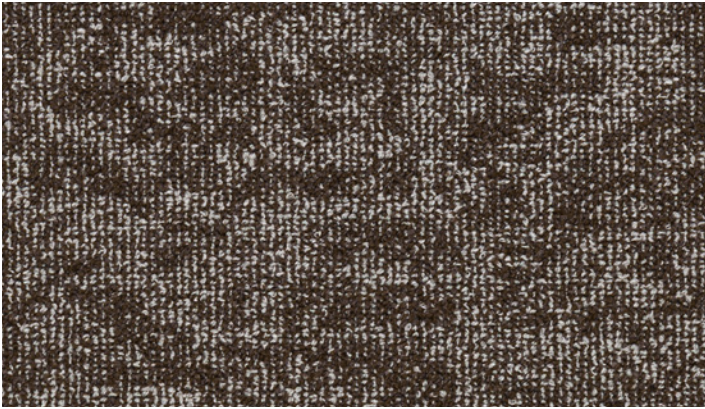


**BRINDLE | 56716**

## SLATER

**CCT - COMMERCIAL CARPET COLLECTION**

18" x 36"



**SEASIDE**

COCOA BEACH | 84907 **SURF**



SWELL LINE | 84117

**HRK - HYBRID RESILIENT KONCRETE**

18" x 36"



TITANIUM | 42527



URBAN | 42545



UMBER | 42544

**HRQ - HYBRID RESILIENT QUARTZ**

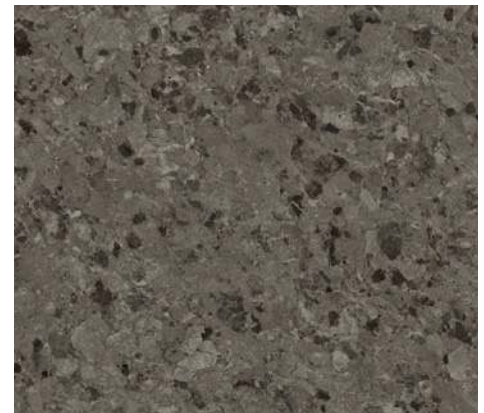
24" x 24"



FLINT | 56713



FOSSIL | 56714



BRINDLE | 56716

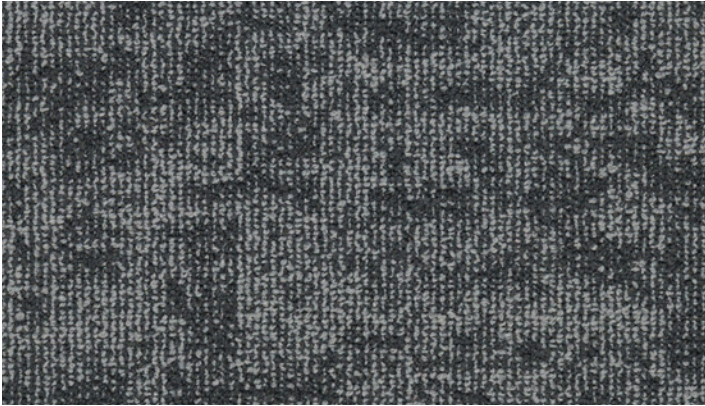
**DESIGNED TO PAIR**



# SKY WHEEL

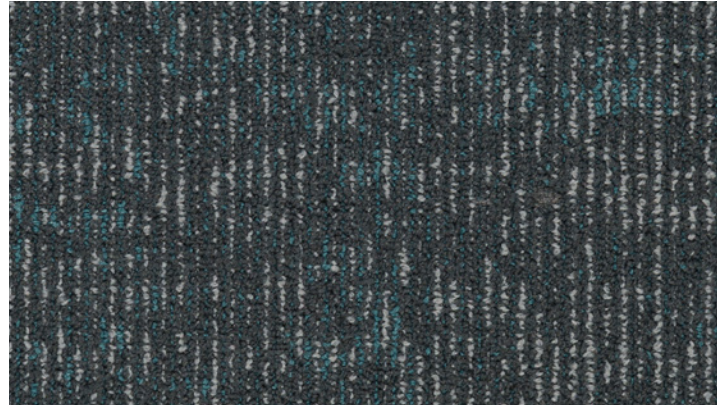
**CCT - COMMERCIAL CARPET COLLECTION**

18" x 36"



**SEASIDE**

MYRTLE BEACH | 13902



**SURF**

SEAFOAM | 13112

**HRK - HYBRID RESILIENT KONCRETE**

18" x 36"



TITANIUM | 42527



URBAN | 42545



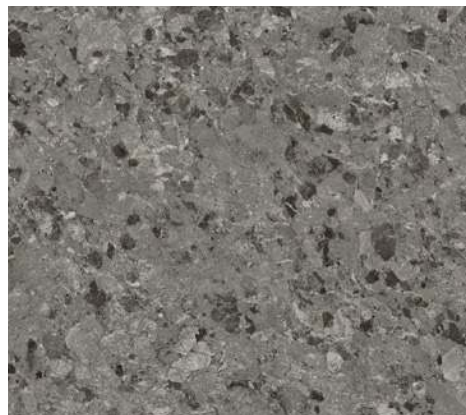
IRON | 42504

**HRQ - HYBRID RESILIENT QUARTZ**

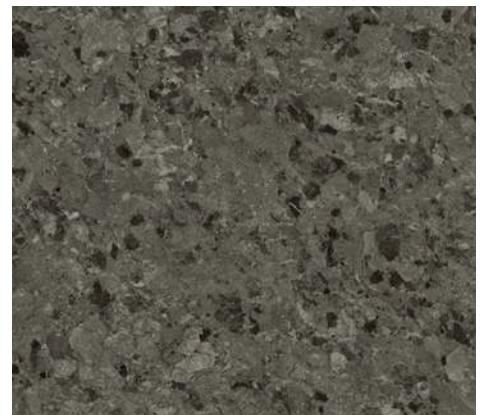
24" x 24"



FLINT | 56713



FOSSIL | 56714



GRAPHITE | 56715

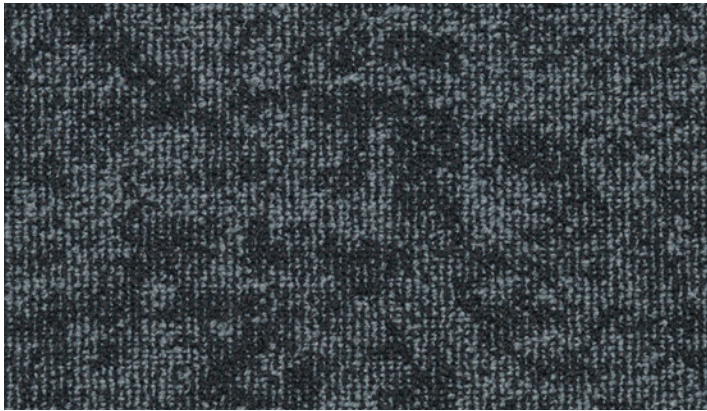
**DESIGNED TO PAIR**



# BIG SUR

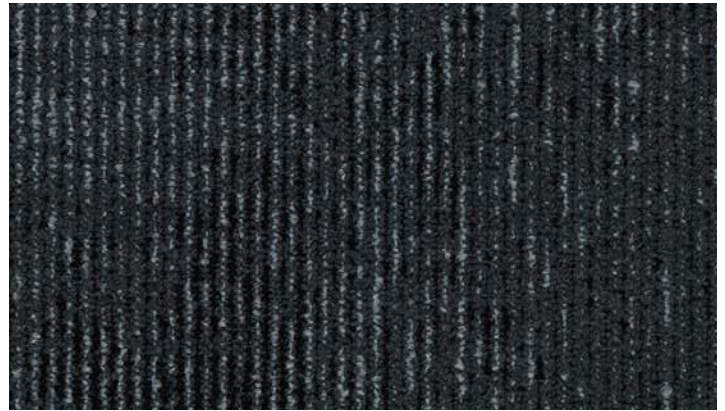
**CCT - COMMERCIAL CARPET COLLECTION**

18" x 36"



**SEASIDE**

MALIBU | 12906 **SURF**



FIRST POINT | 12116

**HRK - HYBRID RESILIENT KONCRETE**

18" x 36"



URBAN | 42545



IRON | 42504



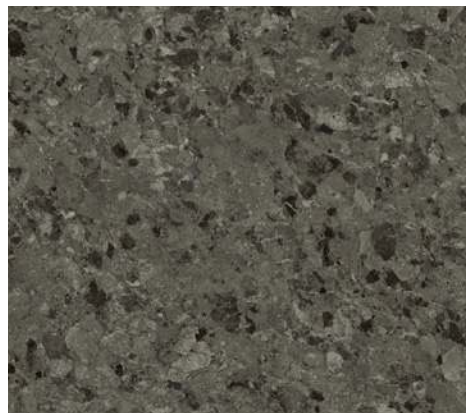
INDIGO | 42547

**HRQ - HYBRID RESILIENT QUARTZ**

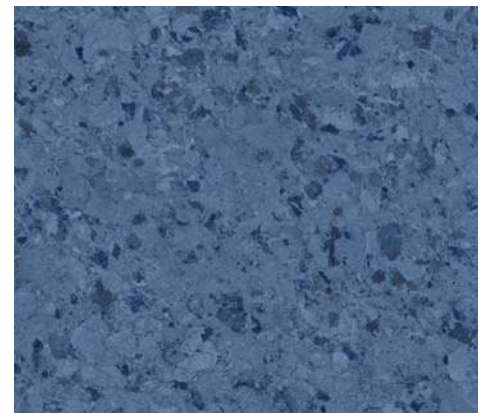
24" x 24"



FOSSIL | 56714



GRAPHITE | 56715



BLUE PEARL | 56717

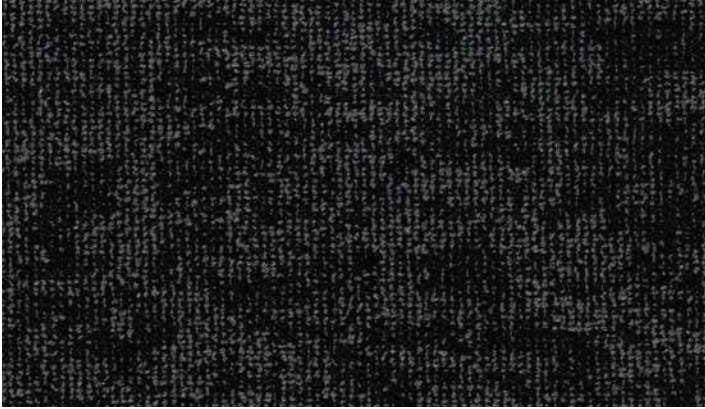
**DESIGNED TO PAIR**



# GURNEYS

**CCT - COMMERCIAL CARPET COLLECTION**

18" x 36"



**SEASIDE**

**MONTAUK | 93903 SURF**



**DITCH PLAINS | 93113**

**HRK - HYBRID RESILIENT KONCRETE**

18" x 36"



**TITANIUM | 42527**



**URBAN | 42545**



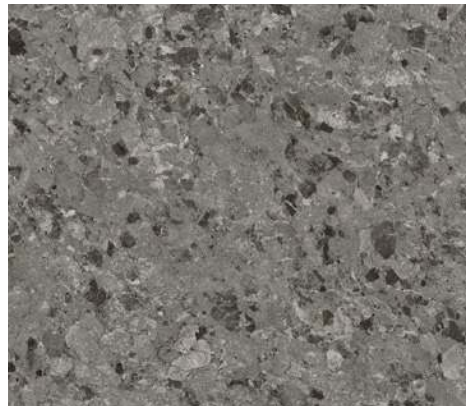
**IRON | 42504**

**HRQ - HYBRID RESILIENT QUARTZ**

24" x 24"



**FLINT | 56713**



**FOSSIL | 56714**



**GRAPHITE | 56715**

**DESIGNED TO PAIR**



# STAGE ROAD

**CCT - COMMERCIAL CARPET COLLECTION**

18" x 36"



**SEASIDE**

HALF MOON BAY | 11908



**SURF**

MAVERICKS | 11118

**HRK - HYBRID RESILIENT KONCRETE**

18" x 36"



TITANIUM | 42527



URBAN | 42545



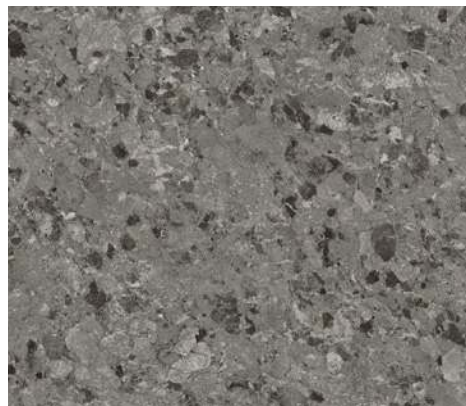
IRON | 42504

**HRQ - HYBRID RESILIENT QUARTZ**

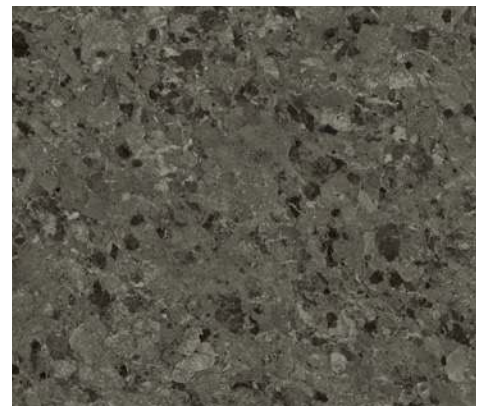
24" x 24"



FLINT | 56713



FOSSIL | 56714



GRAPHITE | 56715

**DESIGNED TO PAIR**



# BACK BAY

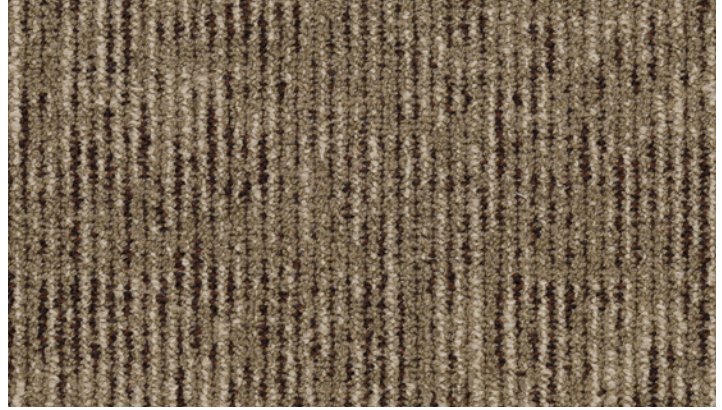
**CCT - COMMERCIAL CARPET COLLECTION**

18" x 36"



**SEASIDE**

**SANDBRIDGE | 82904 SURF**



**GOLDEN BREAK | 82114**

**HRK - HYBRID RESILIENT KONCRETE**

18" x 36"



**LUNAR | 42542**



**TITANIUM | 42527**



**UMBER | 42544**

**HRQ - HYBRID RESILIENT QUARTZ**

24" x 24"



**RIVERBED | 56712**



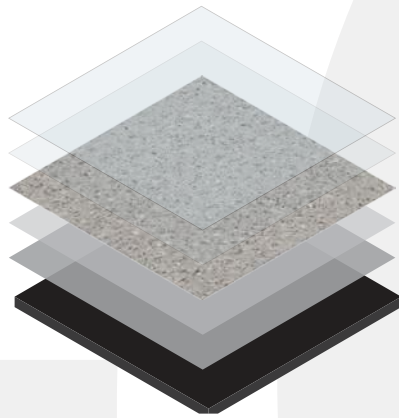
**FLINT | 56713**



**BRINDLE | 56716**

## THE CONTRACT180 DIFFERENCE

At Contract180, we believe in offering versatile solutions that enhance both function and design. Our flooring collections are carefully curated to stand out on their own while seamlessly complementing each other. With a range of colors and textures that pair beautifully, we make it easy for you to create cohesive, stunning spaces. Explore our product lines and find the perfect match for your vision, knowing that every option has been **Designed to Stand Alone, Built to Work Together.**



### HRQ

#### STONE SHIELD TECHNOLOGY

HRQ ENHANCED WITH STONE SHIELD TECHNOLOGY, OFFERS UNPARALLELED SCRATCH RESISTANCE AND DURABILITY. ITS ROBUST, STONE-LIKE SURFACE MAKES IT THE PREMIER CHOICE FOR HIGH-TRAFFIC COMMERCIAL SPACES, SUCH AS SCHOOLS, HEALTHCARE FACILITIES, AND CORPORATE ENVIRONMENTS.

#### QUARTZ DESIGN FILM

DETAIL IN HIGH DEFINITION. HRQ'S QUARTZ DESIGN FILM MIMICS THE APPEARANCE OF REAL QUARTZ, ADDING A STYLISH AND CONTEMPORARY LOOK.

#### BALANCING LAYERS

STRONG AND DURABLE BALANCING LAYERS PREVENT CURLING AND CUPPING, ENSURING THE FLOORING REMAINS FLAT AND SECURE.

#### DETAILS

##### SIZE

24 in x 24 in

##### THICKNESS

3 mm

##### WEAR LAYER

20 mil + SST

##### SQFT/BOX

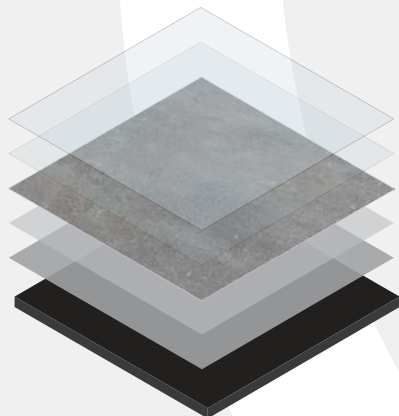
38.75 sqft

##### ASTM F970

2000 psi

##### PCS/BOX

10 pcs



### HRK

#### STONE SHIELD TECHNOLOGY

HRK ENHANCED WITH STONE SHIELD TECHNOLOGY, OFFERS UNPARALLELED SCRATCH RESISTANCE AND DURABILITY. ITS ROBUST, STONE-LIKE SURFACE MAKES IT THE PREMIER CHOICE FOR HIGH-TRAFFIC COMMERCIAL SPACES, SUCH AS SCHOOLS, HEALTHCARE FACILITIES, AND CORPORATE ENVIRONMENTS.

#### CONCRETE DESIGN FILM

DETAIL IN HIGH DEFINITION. HRK'S CONCRETE DESIGN FILM MIMICS THE APPEARANCE OF REAL CONCRETE, ADDING A STYLISH AND CONTEMPORARY LOOK.

#### BALANCING LAYERS

STRONG AND DURABLE BALANCING LAYERS PREVENT CURLING AND CUPPING, ENSURING THE FLOORING REMAINS FLAT AND SECURE.

#### DETAILS

##### SIZE

18 in x 36 in

##### THICKNESS

3 mm

##### WEAR LAYER

20 mil + SST

##### SQFT/BOX

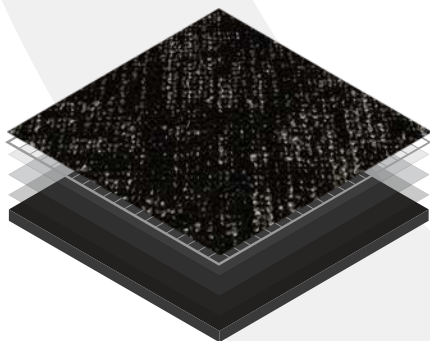
35.95 sqft

##### ASTM F970

2000 psi

##### PCS/BOX

8 pcs



### CCT

#### SOLUTION DYED FIBER

#### WOVEN SYNTHETIC

#### PERFORMANCE POLYMER

#### STABILIZING LAYER

#### EXTREME PLUS+ BACKING

#### DETAILS

##### SIZE

18 in x 36 in

##### MATERIAL

Type 6 Nylon

##### BACKING

Extreme Plus

##### SQYDS/BOX

8 sq/yds

##### PCS/BOX

16 pcs



**DESIGNED TO PAIR**



# DESIGNED TO PAIR

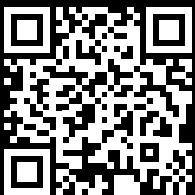


## **SPECIFY WITHOUT COMPROMISE.**

You shouldn't have to compromise your vision just to match disparate materials. Contract180 engineers premium carpet tile and hybrid resilient flooring with perfectly matched palettes, eliminating the guesswork of pairing surfaces across your commercial footprint. Find the exact aesthetic you need to move from sample to spec without the friction.

**Designed to Stand Alone, Built to Work Together.**





[CONTRACT180.COM](https://CONTRACT180.COM)



**CONTRACT180**